



kurvana<sup>®</sup>

**ETHEREAL**

SOLVENTLESS

LAUNCH COLLECTION  
SPRING-SUMMER 2025



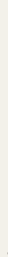
# TABLE OF CONTENTS

04



INTRODUCTION  
TO ETHEREAL

06



THE ETHEREAL  
DIFFERENCE

10



MEET THE ETHEREAL  
COLLECTION

12



THE ART & SCIENCE  
BEHIND ETHEREAL

14



THE ALL-IN-ONE  
HARDWARE

# ELEVATING CANNABIS TO ITS PUREST FORM

A hand holding a blue vape pen against a blue sky with clouds. The image is a square inset within the large text layout.

## WELCOME TO ETHEREAL

ETHEREAL is more than a product—it is a refined cannabis experience. Crafted through meticulous solventless extraction, ETHEREAL embodies purity, potency, and innovation. Using only ice, water, heat, and pressure, we preserve the true essence of each strain, delivering a full-spectrum, unadulterated cannabis experience that connoisseurs demand. With each inhale, ETHEREAL invites you to journey into the rarest expression of live rosin.



**ETHEREAL  
SOLVENTLESS**  
Pure Live Rosin | Rechargeable All-In-One



**kurvana**

**ETHEREAL  
SOLVENTLESS**

**Gurple**  
Sativa

Granddaddy Purple X Unknown

● Grape ● Woods ● Floral

Immerse yourself in the vibrant, uplifting aroma of deep grape, intertwined with earthy woods and a subtle floral essence, delivering an energetic and invigorating experience.



Rechargeable &  
Ready-to-Use  
All-In-One



# A HIGHER STANDARD



**ETHEREAL IS CRAFTED USING A  
PROCESS THAT RESPECTS THE  
PLANT'S INTEGRITY FROM  
START**

**TO**

**FINISH**



# OF PURE LIVE ROSIN



01

### Pure Live Rosin

Extracted from fresh-frozen cannabis flower to maintain complete terpene and cannabinoid profiles.



02

### Small-Batch Production

Ensuring consistency, potency, and strain specificity.

03

### Zero Additives

First-press rosin, meaning nothing but the highest-grade hash is used.



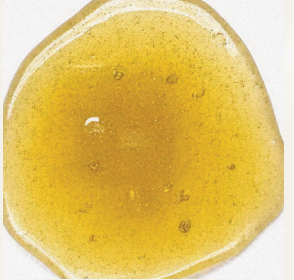
04

### Filled to Perfection

Experience the true essence of the strain without degradation.







# THE LAUNCH COLLECTION



## Hash Burger

Indica

Han Solo × Double Burger

● Lemon ● Gas ● Musky

Dive into an aromatic adventure with a bold fusion of lemon zest and a potent gas undertone, followed by a deep, musky finish that lingers like a memorable evening.

Total Cannabinoids **82.77%**

Total THC	Total CBD	Total Terpenes
78.56%	<0.20%	7.86%

### Primary Terpenes

- Limonene
- Beta-Caryophyllene
- Beta-Myrcene
- Alpha-Humulene
- Alpha-Bisabolol



## Tropaya

Indica

Tropicanna Cookies × Papaya

● Tropical ● Honeyed ● Lemon

Embark on a flavor voyage where the vibrant zest of tropical fruits melds with the sweet, honeyed richness, accented by a refreshing hint of lemon, creating a truly uplifting and calming experience.

Total Cannabinoids **85.64%**

Total THC	Total CBD	Total Terpenes
79.81%	<0.20%	5.55%

### Primary Terpenes

- Limonene
- Beta-Myrcene
- Linalool
- Beta-Caryophyllene
- Alpha-Pinene



## Frozen Banana

Hybrid

OG Kush × Banana Kush

● Banana ● Cream ● Vanilla

Experience the chill of a frozen treat with the luscious sweetness of banana, blended with creamy undertones and a touch of vanilla frost, perfect for a relaxing journey.

Total Cannabinoids **89.32%**

Total THC	Total CBD	Total CBG	Total Terpenes
77.24%	0.22%	9.47%	6.36%

### Primary Terpenes

- Beta-Caryophyllene
- Limonene
- Alpha-Humulene
- Alpha-Bisabolol
- Guaiol



## Rainbow Beltz

Hybrid

Zkittlez × Moonbow

● Sweet ● Fruity ● Earthy

Indulge in a sensory delight where sweetness intertwines with a burst of fruity exuberance, grounded by deep, earthy musks, offering a colorful and soothing escape.

**Total Cannabinoids 80.85%**

Total THC  
73.16%

Total CBD  
0.42%

Total Terpenes  
6.78%

### Primary Terpenes

- Beta-Caryophyllene
- Limonene
- Alpha-Bisabolol
- Linalool
- Alpha-Humulene



## Gurple

Sativa

Granddaddy Purple × Unknown

● Grape ● Woods ● Floral

Immerse yourself in the vibrant, uplifting aroma of deep grape, intertwined with earthy woods and a subtle floral essence, delivering an energetic and invigorating experience.

**Total Cannabinoids 80.56%**

Total THC  
75.49%

Total CBD  
<0.20%

Total Terpenes  
7.57%

### Primary Terpenes

- Beta-Caryophyllene
- Limonene
- Alpha-Humulene
- Beta-Myrcene
- Alpha-Bisabolol



## Tropicanna Cookies

Sativa

G.S. Cookies × Tangie

● Tropical ● Cookie Dough ● Vanilla

Awaken your senses with a vibrant burst of tropical citrus, harmonized with the comforting sweetness of cookie dough and a touch of warm vanilla, inviting you to a sunny, blissful escape.

**Total Cannabinoids 78.38%**

Total THC  
73.40%

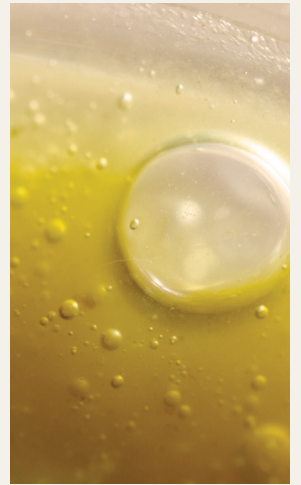
Total CBD  
<0.20%

Total Terpenes  
6.16%

### Primary Terpenes

- Beta-Caryophyllene
- Alpha-Humulene
- Limonene
- Alpha-Bisabolol
- Linalool

# MASTERING THE ART OF



**ETHEREAL EMBODIES SOLVENTLESS PERFECTION,  
PRESERVING CANNABINOIDS AND TERPENES  
WHILE ENSURING EXCEPTIONAL  
PURITY, ——— FLAVOR, ——— AND ——— POTENCY.**

# SOLVENTLESS EXTRACTION



# THE ETHEREAL PROCESS

## TRICHOME SELECTION

### The Foundation of True Solventless Excellence

The quality of live rosin begins with selecting only the most premium trichome heads, which contain the highest concentrations of cannabinoids and terpenes. ETHEREAL uses 73µ-149µ hash, a range scientifically determined to capture the ideal balance of potency and flavor. This ensures that only the most resinous, mature trichomes are extracted, resulting in a superior full-spectrum product.

#### → 73µ-90µ

Highly concentrated, capturing the most flavorful terpenes for an unmatched aromatic experience.

#### → 90µ-149µ

Balances potency and richness, ensuring a dynamic, well-rounded effect profile.

#### → No Low-Grade Material

Unlike many extracts that include smaller, less mature trichome heads, ETHEREAL focuses exclusively on high-quality resin glands, preserving the plant's integrity.

## COLD CURING & ICE WATER WASHING

### Preserving the Most Volatile Terpenes

Live rosin extraction requires precise temperature control to maintain the plant's delicate terpene structure. ETHEREAL's ice water washing process uses ultra-cold, highly filtered water to gently separate trichomes from plant material, avoiding heat exposure that could degrade valuable compounds.

#### → Ultra-Cold Water Filtration

Helps preserve monoterpenes, the lightest and most volatile compounds that contribute to the strain's unique aroma.

#### → Minimized Oxidation

Cold curing prevents degradation, ensuring that every batch retains the fresh, complex profile of the original cannabis plant.

#### → Hand-Tuned Agitation

Carefully controlled agitation prevents excessive plant material from contaminating the final hash, leading to a cleaner, more refined extraction.

## PRECISE HEAT & PRESSURE PRESSING

### Unlocking the Full Potential of Live Rosin

Unlike standard solventless extracts, ETHEREAL's live rosin is pressed at carefully controlled temperatures and pressures to preserve cannabinoids and terpenes while eliminating unwanted plant lipids.

#### → Temperature Below 90°C

Higher temperatures can degrade cannabinoids and terpenes, diminishing the experience. ETHEREAL's low-temp press retains the strain's full integrity.

#### → 4,000-5,000 psi Pressure

This optimal pressure range allows for smooth extraction, ensuring the highest yield of trichome resin while preventing excessive plant matter contamination.

#### → First-Press Only

Many rosin brands use second or third presses to extract additional yield. ETHEREAL prioritizes first-press purity, meaning only the most flavorful and potent oil makes it into each product.

## SINGLE-SOURCE GENETICS

### The Importance of Premium Cannabis Flower

ETHEREAL sources only the highest-quality, single-origin cannabis, cultivated by experienced growers who specialize in strains ideal for solventless extraction. Each batch is carefully curated to ensure purity, potency, and consistency, with a focus on trichome-rich strains that excel in live rosin production.

#### → No Trim, No Shake

ETHEREAL never uses lower-grade plant material, ensuring that each product is derived from whole fresh-frozen flowers.

#### → Strain-Specific Terpene Profiles

Each strain is carefully selected for its unique combination of cannabinoids, terpenes, and effects, creating an unparalleled sensory experience.

#### → Exclusive Small-Batch Production

ETHEREAL's live rosin is handcrafted in limited quantities, emphasizing quality over mass production and ensuring a boutique, connoisseur-level product.

# POWER

# MEETS

# PRECISION

# THE ETHEREAL HARDWARE

ETHEREAL is exclusively available in Kurvana's newest Rechargeable All-In-One (AIO) 0.5mL device, specifically engineered for live rosin. This revolutionary hardware was meticulously developed to accommodate the delicate nature of solventless rosin, ensuring every draw is smooth, flavorful, and true to the original cannabis experience.

A

## Ergonomic Redesign

Taller, wider, and optimized for the perfect grip, with sleek portability.

B

## Refined Airflow System

Engineered to enhance inhalation, allowing for a smooth, effortless draw while maximizing vapor output and terpene preservation.

C

## Low-Temperature Vaporization

Our latest CTEC heating element ensures precise temperature control, preventing overheating that could degrade terpenes and purity.

D

## Adjustable Airflow Control

An intuitive carb hole to adjust airflow for a tighter draw.

E

## USB-C Rechargeable

Sustainable and efficient, providing faster charge times and enhanced reliability for on-the-go convenience.

A →

← B

C →

← D

E →

USB-C CHARGING CABLE NOT INCLUDED.

An empty integrated cannabis vaporizer shall be properly disposed of as hazardous waste at a household hazardous waste collection facility or other approved facility.

Protected by U.S. Patent Nos. D921,281 and D957,050.

*PURITY IS THE PHILOSOPHY; ETHEREAL IS THE EXPRESSION.*