

kurvana®

SPRING-SUMMER 2025

**COLLECTION
OVERVIEW**

ETHEREAL | Solventless, Pure Live Rosin

ETHEREAL is our latest collection dedicated to providing a premium live rosin experience crafted from 100% fresh-frozen flower. It is made using only ice water, heat, and pressure, preserving the plant's purest essence and full-spectrum profile. Each small batch is curated from top-tier strains, ensuring unmatched quality and flavor. Our custom hardware completes the experience, allowing connoisseurs to enjoy rosin on the go without sacrificing potency or taste.

Key Features

- Crafted exclusively from fresh-frozen flower.
- First press from six-star hash.
- 100% solventless with no additives.
- Curated in small batches for premium, full-spectrum flavor.
- Preserves authentic plant essence through gentle heat and pressure.
- Custom-designed hardware optimizes the delicate nature of live rosin.



Strain Guide

ETHEREAL Pure Live Rosin strains retain the full-spectrum effects and can help combat: anxiety, depression, inflammation, insomnia, nausea, pain, stress while promoting appetite, creativity, energy, and relaxation.

Strain Name	Strain Type	Symbol	Anxiety	Appetite	Creativity	Depression
Hash Burger	Indica	▽	●	○	○	○
Tropaya	Indica	▽	●	●	○	●
Rainbow Beltz	Hybrid	▽△	●	○	○	●
Frozen Bananas	Hybrid	▽△	●	●	○	●
Gurple	Sativa	△	○	○	●	●
Tropicanna Cookies	Sativa	△	○	○	●	●

*This guide is for informational purposes only. This information is neither a substitute for, nor does it replace, medical advice, diagnosis, or treatment. If you have any concerns or questions about your health, you should always consult with a physician or other healthcare professionals.

Featured Strains

Hash Burger

Han Solo × Double Burger

Indica | Lemon, Gas, Musky

Dive into an aromatic adventure with a bold fusion of lemon zest and a potent gas undertone, followed by a deep, musky finish that lingers like a memorable evening.

Total Cannabinoids

82.77%

Total THC	Total CBD	Total Terpenes
78.56%	0.20%	7.86%

Primary Terpenes

- Limonene
- Beta-Caryophyllene
- Beta-Myrcene
- Alpha-Humulene
- Alpha-Bisabolol

Rainbow Beltz

Zkittlez × Moonbow

Hybrid | Sweet, Fruity, Earthy

Indulge in a sensory delight where sweetness intertwines with a burst of fruity exuberance, grounded by deep, earthy musks, offering a colorful and soothing escape.

Total Cannabinoids

80.85%

Total THC	Total CBD	Total Terpenes
73.16%	0.20%	6.78%

Primary Terpenes

- Beta-Caryophyllene
- Limonene
- Alpha-Bisabolol
- Linalool
- Alpha-Humulene

Gurple

Granddaddy Purple × Unknown

Sativa | Grape, Woods, Floral

Immerse yourself in the vibrant, uplifting aroma of deep grape, intertwined with earthy woods and a subtle floral essence, delivering an energetic and invigorating experience.

Total Cannabinoids

80.56%

Total THC	Total CBD	Total Terpenes
75.49%	0.20%	7.57%

Primary Terpenes

- Beta-Caryophyllene
- Limonene
- Alpha-Humulene
- Beta-Myrcene
- Alpha-Bisabolol

More About ETHEREAL

Rosin Extraction

Rosin extraction relies solely on ice water, gentle heat, and pressure to isolate cannabinoids and terpenes from fresh-frozen flower. This solventless method retains the plant's natural flavors, aromas, and potency, resulting in a robust and unprocessed concentrate. By focusing on six-star hash, ETHEREAL captures the purest representation of each strain's profile. The end result is a clean, full-spectrum extract that offers a true-to-flower experience.

Six-Star Hash Rosin

Six-star hash rosin represents the highest tier of hash cleanliness, indicating minimal plant material and maximum flavor. This rating highlights the impeccable quality of the trichome heads used, resulting in enhanced smoothness and potency. By meticulously selecting and pressing only the most pristine resin glands, ETHEREAL achieves unparalleled taste and efficacy. The connoisseur-grade purity of six-star hash rosin underscores ETHEREAL's commitment to excellence in every press.

Custom Low-Temp AIO Device

Our custom low-temperature hardware is meticulously tailored to handle the thicker consistency of pure live rosin, ensuring each draw captures the essence of the flower without scorching or degrading its natural terpenes. By optimizing power output, pore size, and heating element design, the device provides smooth, flavorful vapor from the very first inhale. The result is an on-the-go solution that preserves rosin's delicate profile, allowing connoisseurs to savor every nuanced flavor note.

Recommended Dosing

For a single dose, inhale for 3-5 seconds. Wait 15 minutes before dosing again.

Energy	Inflammation	Insomnia	Nausea	Pain	Relaxation	Stress
○	●	●	●	●	●	●
○	○	●	●	●	●	●
○	○	○	○	●	●	●
○	●	●	○	●	●	●
○	○	○	○	○	○	○
●	●	○	○	○	○	○

ASCND | Live Whole Plant, High-Potency

ASCND is the culmination of the latest extraction science, advanced device technology, and our full-spectrum oil for the purest expression of potency and taste. The line originated from a small, in-house project designed to create the most potent vape cartridge available without sacrificing quality. Because highly potent cannabis oils yield subtle taste profiles, the ASCND profiles are mellow and light. However, do not be misled by ASCND's delicate taste and elegant device; with potencies exceeding 95%, its effects are instant and intense.

Key Features

- High-cannabinoid, full-spectrum, single-origin extracts
- Top-tier, award-winning line with cannabinoids exceeding 95%
- Each oil offers maximized THC levels, exceeding 90%
- Unprecedented testing transparency with every product
- Offering 15+ high-potency, trusted strains
- Available in cartridges and all-in-one devices



Strain Guide

ASCND Live Whole Plant strains retain the full-spectrum effects and can help combat: anxiety, depression, inflammation, insomnia, nausea, pain, stress while promoting appetite, creativity, energy, and relaxation.

Strain Name	Strain Type	Symbol	Anxiety	Appetite	Creativity	Depression
Alien Kush	Indica	▽	●	○	○	●
Jet Fuel	Indica	▽	●	○	●	○
Northern Lights	Indica	▽	○	○	●	●
Papaya Hills	Indica	▽	●	●	○	●
Purple Punch	Indica	▽	●	●	○	●
Space Walker OG	Indica	▽	●	○	○	●
Astro Queen	Hybrid	▽△	○	○	●	●
Blueberry Gelato	Hybrid	▽△	●	●	●	●
Cherry Truffle	Hybrid	▽△	○	●	○	●
Cosmic Glue	Hybrid	▽△	●	●	○	○
Mimosa	Hybrid	▽△	●	●	●	●
Pink Sherbet	Hybrid	▽△	●	●	●	●
Wedding Cake	Hybrid	▽△	○	●	●	●
Amnesia Haze	Sativa	△	○	○	●	●
C. Jack	Sativa	△	○	○	●	●
Georgia Sky	Sativa	△	○	○	●	●
High Fashion	Sativa	△	○	●	○	●
Honey Melonade	Sativa	△	○	●	●	●
Orange Cookies	Sativa	△	○	○	●	●
Tangie Dream	Sativa	△	○	●	●	●

*This guide is for informational purposes only. This information is neither a substitute for, nor does it replace, medical advice, diagnosis, or treatment. If you have any concerns or questions about your health, you should always consult with a physician or other healthcare professionals.

CARBON₂₁ | Curated Concentrates

CARBON₂₁ is our pinnacle vape line, consisting of carefully curated raw concentrates in our latest hardware. We pair our proprietary live-plant curation with a unique extraction method for each strain in this line. Deliberately crafted in small batches, each strain is presented in its rawest concentrate form—rich with the cannabinoid, flavonoid, and terpene complexities of the live cannabis plant. An experience most similar to dabbing your favorite concentrates.

Key Features

- Live-whole plant extracts paired with a unique concentrate
- Each oil celebrates the rich complexities of the original living cannabis plant
- Extracted from cryogenically frozen material
- Unprecedented testing transparency with every product
- Offering limited-release, small-batch strains
- Available in cartridges and all-in-one devices



Strain Guide

CARBON₂₁ curated-concentrates retain the full-spectrum effects and can help combat: anxiety, depression, inflammation, insomnia, nausea, pain, stress while promoting appetite, creativity, energy, and relaxation.

Strain Name	Strain Type	Symbol	Anxiety	Appetite	Creativity	Depression
Donny Burger Sauce	Indica	▽	●	○	○	●
Blackjack Diamonds	Hybrid	▽△	●	○	○	●
Chocolope Sauce	Sativa	△	○	○	●	●

*This guide is for informational purposes only. This information is neither a substitute for, nor does it replace, medical advice, diagnosis, or treatment. If you have any concerns or questions about your health, you should always consult with a physician or other healthcare professionals.

Featured Strains

Blackjack Diamonds

Black Domina × Jack Herer

Hybrid | Earthy, Pine, Sweet

Heavy earthy tones translate to a sweet, piney escape, leaving you in a blissful, clear-headed mindset.

Total Cannabinoids

88.52%

Total THC	Total THCa	Total CBD
83.38%	4.73%	0.20%

Primary Terpenes

- Terpinolene
- Beta-Caryophyllene
- Ocimene
- Limonene
- Beta-Myrcene

Chocolope Sauce

Chocolate Thai × Cannalope Haze

Sativa | Earthy, Sweet, Chocolate

Indulge yourself with this irresistible combination of rich chocolate and sweet earthy notes for a balanced, euphoric and uplifting mental shift.

Total Cannabinoids

90.95%

Total THC	Total THCa	Total CBD
85.29%	8.12%	0.20%

Primary Terpenes

- Limonene
- Beta-Caryophyllene
- Linalool
- Alpha-Humulene
- Beta-Myrcene

Donny Burger Sauce

GMO × Han Solo Burger

Indica | Gas, Cheese, Garlic

Dive into a rich, savory experience where bold flavors meet deep relaxation, grounding your senses in a soothing, full-bodied high.

Total Cannabinoids

89.67%

Total THC	Total THCa	Total CBD
85.80%	5.42%	0.20%

Primary Terpenes

- Beta-Caryophyllene
- Limonene
- Alpha-Humulene
- Beta-Myrcene
- Alpha-Bisabolol

Featured Extraction Methods

Diamonds

Diamonds are the crystalline structures that develop in sauce, a cannabis concentrate with high levels of terpenes and a glossy runny texture. Concentrated by using a closed-loop system that allows the resulting solution to settle under various pressures and temperatures. This environment promotes the natural separation of the major cannabinoids, including THCa in the form of diamonds resulting in a terpene-rich, liquid with THCa diamonds.

Sauce

Sauce is one of many extraction methods we use to produce a concentrate with high levels of terpenes and incredibly robust flavor profiles. The concentrated batches are curated by employing sub-zero temperatures and strain-dependent techniques to help control the consistency and viscosity throughout the extraction process, allowing cannabinoid compounds to crystallize. The result is a high terpene and cannabinoid sauce concentrate ready to be enjoyed without dabbing hardware.

What is THCa?

THCa, or tetrahydrocannabinolic acid, is a non-psychoactive cannabinoid present in raw cannabis, and it serves as the precursor to THC. When cannabis is heated or smoked, THCa undergoes decarboxylation, transforming into THC, which provides the well-known psychoactive effects. For Kurvana CARBON₂₁, THCa offers therapeutic benefits such as anti-inflammatory, neuroprotective, and anti-emetic properties.

Recommended Dosing

For a single dose, inhale for 3-5 seconds. Wait 15 minutes before dosing again.

Energy	Inflammation	Insomnia	Nausea	Pain	Relaxation	Stress
○	●	●	○	●	●	●
●	○	○	○	●	●	●
●	●	○	○	○	●	●



ASCND | HONM





ASCND | PARIS



Originals | Live Whole Plant, Terpene-Rich

Originals is our classic, timeless terpene-rich extract honoring the distinct identities of the most popular strains of all time. Our classic flower strains feature native cannabis terpenes that capture the taste and feel of the flower they came from. With strains well-loved since their inception and elevated potencies, this differentiated line appeals to those who value intricate aromas and flavors.

Key Features

- Terpene-rich extracts that taste and feel like the original flower.
- Timeless strains, rich native cannabis terpenes with over 85% cannabinoids
- Each oil honors the distinct identities of the flower it came from
- Unprecedented testing transparency with every product
- Offering 10 terpene-rich, classic strains
- Available in cartridges and all-in-one devices



Strain Guide

Originals terpene-rich strains retain the full-spectrum effects and can help combat: anxiety, depression, inflammation, insomnia, nausea, pain, stress while promoting appetite, creativity, energy, and relaxation.

Strain Name	Strain Type	Symbol	Anxiety	Appetite	Creativity	Depression
Blackberry Kush	Indica	▽	●	●	○	○
Master OG	Indica	▽	●	○	○	○
True OG	Indica	▽	●	●	○	○
Grapefruit Kush	Hybrid	▽△	○	○	●	●
G.S. Cookies	Hybrid	▽△	●	●	○	●
Blue Dream	Sativa	△	○	○	●	●
Jack Herer	Sativa	△	○	●	●	●
Pineapple Express	Sativa	△	○	●	●	●
Sour Diesel	Sativa	△	●	●	○	○

*This guide is for informational purposes only. This information is neither a substitute for, nor does it replace, medical advice, diagnosis, or treatment. If you have any concerns or questions about your health, you should always consult with a physician or other healthcare professionals.

cbd + Minor Cannabinoids | Live Whole Plant, Terpene-Rich

With effective ratios such as 10:1:5 and 5:1:5, this line appeals to consumers looking to micro-dose throughout the day, explore implementing cannabis into their daily routine, or experience a smoother cannabis without the adverse effects associated in high-concentrated products. Our ratio line goes beyond CBD and THC, harnessing the entire wellness potential of the cannabis plant. Each blend features our signature live whole plant extract paired with a unique ratioed combination of natural botanicals, terpenes, key cannabinoids like CBG and CBN, and other essential bioactive ingredients that work in synergy to provide the ultimate wellness benefits.

Key Features

- Live whole plant, full-spectrum extracts infused with all natural botanicals
- Terpene-rich line offering up to 80% cannabinoids
- Each oil offers effective ratios, including CBG and CBN for overall wellness
- Unprecedented testing transparency with every product
- Offering 3 terpene-rich, trusted strains
- Available exclusively in all-in-one devices



Strain Guide

CBD + Minor Cannabinoid strains retain the full-spectrum effects and can help combat: anxiety, depression, inflammation, insomnia, nausea, pain, stress while promoting appetite, creativity, energy, and relaxation.

Strain Name	Strain Type	Symbol	Anxiety	Appetite	Creativity	Depression
Sunset Tea	Infused Indica	▽	●	●	○	○
Banana Smoothie	Infused Hybrid	▽△	○	●	●	●
Mint Chip	Infused Sativa	△	○	●	●	●

*This guide is for informational purposes only. This information is neither a substitute for, nor does it replace, medical advice, diagnosis, or treatment. If you have any concerns or questions about your health, you should always consult with a physician or other healthcare professionals.

Featured Strains

CBD:CBN:THC

Sunset Tea 10:1:5

Infused Indica | Earthy, Floral, Herbal

A high-CBD blend infused with fragrant lavender blossoms and chamomile for a soothing and calming impression.

Total Cannabinoids

81.05%

Total CBD	Total CBN	Total THC
50.01%	5.04%	25.31%

Primary Terpenes

- Beta-Caryophyllene
- Linalool
- Beta-Myrcene
- Alpha-Humulene
- Camphor

CBD:CBG:THC

Banana Smoothie 5:1:5

Infused Hybrid | Fruity, Sweet, Tropical

A balanced CBD:THC ratio blended with signature notes that are reminiscent of the desirable taste of a banana smoothie.

Total Cannabinoids

70.21%

Total CBD	Total CBG	Total THC
31.29%	6.09%	31.79%

Primary Terpenes

- Linalool
- Beta-Caryophyllene
- Beta-Myrcene
- Limonene
- Alpha-Humulene

CBD:CBG:THC

Mint Chip 5:1:10

Infused Sativa | Sweet, Minty, Refreshing

A tasteful blend of chocolate cookie and dense mint flavor provides a well-balanced experience.

Total Cannabinoids

81.82%

Total CBD	Total CBG	Total THC
25.15%	5.50%	50.33%

Primary Terpenes

- Alpha-Humulene
- Beta-Caryophyllene
- Eucalyptol
- Terpinolene
- Caryophyllene Oxide

Featured Cannabinoids

CBD (Cannabidiol)

Naturally non-psychoactive, CBD is one of the most highly discussed cannabinoids. Gaining quick popularity, CBD is commonly used to address anxiety, insomnia and many chronic pains.

CBG (Cannabigerol)

Often referred to as the "Mother of all Cannabinoids" CBG is the precursor of popular cannabinoids THC, CBD, and CBC. CBG is known to improve mood, reduce inflammation, and is an anti-microbial.

CBN (Cannabinol)

A rising star in the world of cannabinoids, CBN is a mildly psychoactive cannabinoid that is often found in matured plants. CBN is naturally produced from THC degradation and may be used as a potential sleep aid.

THC (delta-9-tetrahydrocannabinol)

Popular among recreational cannabis users, THC or the "superstar" of cannabis is known for producing the psychoactive effects. It is also known to produce euphoric feelings, stimulate appetite and relieve anxiety.

Recommended Dosing

For a single dose, inhale for 3-5 seconds. Wait 15 minutes before dosing again.

Energy	Inflammation	Insomnia	Nausea	Pain	Relaxation	Stress
○	●	●	●	●	●	●
●	●	●	●	●	●	●
●	●	○	●	●	○	●

Tinctures | Botanicals + Cannabis Infused

Kurvana Botanicals is our tincture collection of all-natural, cannabis-infused liposomals. Consisting of key bioactive plant ingredients known to synergistically promote and enhance everyday wellness with **NO** artificial flavoring, coloring, alcohol, or fillers. Each tincture promotes specific therapeutic benefits using only the finest natural and natural ingredients, including full-spectrum cannabis oil.

Key Features

- Advanced Liposomal and Nano Technology Delivery
- Increased bioavailability and rapid absorption
- Stable and predictable experience with every use
- Precise and consistent dosing



Blend Guide

Kurvana tinctures, featuring a blend of CBD, minor cannabinoids, adaptogens, and nootropics, harness full-spectrum effects to help alleviate anxiety, depression, inflammation, insomnia, nausea, pain, and stress, while enhancing appetite, creativity, energy, and relaxation.

Strain Name	Ratio	Anxiety	Appetite	Creativity	Depression
Balance	1:1:1 (CBD:CBG:THC)	●	●	●	●
Calm	20:1:1 (CBD:CBN:THC)	●	○	○	○
Dream	1:1:4:2 (CBD:CBG:CBN:THC)	●	○	○	○
Paradise	1:1:6 (CBD:CBN:THC)	●	●	●	●
Recovery	2:1:3 (CBD:CBG:THC)	○	●	●	●
Sensual	1:1:6 (CBD:CBG:THC)	○	●	●	●
Sunshine	1:1:10 (CBD:CBG:THC)	●	●	●	●

*This guide is for informational purposes only. This information is neither a substitute for, nor does it replace, medical advice, diagnosis, or treatment. If you have any concerns or questions about your health, you should always consult with a physician or other healthcare professionals.

Featured Strains

CBD:CBG:THC

Sensual 1:1:6

A stimulating tincture for intimate moments —made with passionflower, ashwagandha, and saffron oil, this is designed to generate feelings of passion, warmth, and excitement to enhance sensuality.

Total Cannabinoids
1,200.00 mg

Total CBD 150.00 mg	Total CBG 150.00 mg	Total THC 900.00 mg
-------------------------------	-------------------------------	-------------------------------

Bioactive Ingredients

- Passionflower
- Ashwagandha
- Saffron

CBD:CBG:CBN:THC

Dream 1:1:4:2

An exotic tincture aimed to promote a healthy sleeping pattern with its inducing sense of tranquility, guiding you into a calming state of peaceful nirvana.

Total Cannabinoids
1,200.00 mg | **Total THC**
300.00 mg

Total CBD 150.00 mg	Total CBG 150.00 mg	Total CBN 600.00 mg
-------------------------------	-------------------------------	-------------------------------

Bioactive Ingredients

- Reishi Mushroom
- Kava Kava
- Lemon Balm

CBD:CBG:THC

Recovery 2:1:3

A revitalizing boost for people who need it most. Using potent botanicals, our alcohol-free tincture works to sustain energy levels, support full-body recovery, and maximize senses.

Total Cannabinoids
1,200.00 mg

Total CBD 400.00 mg	Total CBG 200.00 mg	Total THC 600.00 mg
-------------------------------	-------------------------------	-------------------------------

Bioactive Ingredients

- Thai Basil
- Green Tea
- Peppermint

What are adaptogens?

Adaptogens are natural substances used in Kurvana tinctures that help the body adapt to stress and maintain balance by supporting the body's ability to cope with physical, chemical, and biological stressors.

Examples of adaptogens

Kurvana tinctures incorporate adaptogens such as ashwagandha, rhodiola, reishi mushroom, rhodiola, and cordyceps to enhance overall well-being.

What are nootropics?

Nootropics, featured in Kurvana tinctures, are cognitive enhancers that improve brain function, including memory, creativity, focus, and overall mental performance.

Examples of nootropics

Kurvana tinctures incorporate nootropics such as bacopa, rhodiola, lion's mane mushroom, and gotu kola to support cognitive function and stress resilience.

Recommended Dosing

To start, place the oil under the tongue, holding it there 15 seconds before swallowing. Wait 1 hour before dosing again.

Energy	Inflammation	Insomnia	Nausea	Pain	Relaxation	Stress
●	●	●	●	●	●	●
○	●	●	●	●	●	●
○	●	●	●	●	●	●
●	●	○	●	●	○	○
●	●	○	●	●	○	●
●	○	○	○	●	○	●
●	●	○	○	●	○	●

Hardware | Buttonless Batteries

Our batteries feature buttonless technology and quick charge integration make the device convenient and simple to use. We combine superior device materials with essential features optimized for Kurvana oil.

Key Features

- High Quality Stainless Steel Body
- 10-Second Safety Timer, Quick Charge, 350 mAh Battery
- Gold-plated Positive Pin
- 510 Universal Connection
- 9 Metallic and Soft Touch Finishes



*Kurvana Buttonless Batteries are not compatible with "top airflow" cartridges offered by other manufacturers.

Featured Finishes

Deep Emerald

Buttonless | 350 mAh | Quick Charge

Our automatic batteries combine superior device materials with essential features optimized for Kurvana oil. With details such as a gold-plated positive pin, soft-touch coating and multiple color options, Kurvana batteries go a step beyond the average by combining luxury with efficiency.

Midnight Purple

Buttonless | 350 mAh | Quick Charge

Our automatic batteries combine superior device materials with essential features optimized for Kurvana oil. With details such as a gold-plated positive pin, soft-touch coating and multiple color options, Kurvana batteries go a step beyond the average by combining luxury with efficiency.

Space Blue

Buttonless | 350 mAh | Quick Charge

Our automatic batteries combine superior device materials with essential features optimized for Kurvana oil. With details such as a gold-plated positive pin, soft-touch coating and multiple color options, Kurvana batteries go a step beyond the average by combining luxury with efficiency.

Battery LED Functions



Battery in Use

Bottom LED (Buttonless) turns on.



10 Second Safety Timer

LED flashes 10 times when safety timer is triggered



Low Battery Indicator

LED flashes 10 times when battery is below 3.3 V.



Short Circuit Protection

LED flashes 10 times when faulty cartridge is detected.



Battery Charging

LED illuminates when connected to charger.



Charge Complete

Bottom LED (Buttonless) turns off.

Charger LED Functions



Connected to Power

Battery illuminates when connected to power source.



Pro Tip

Use the Kurvana charger included for best charge times.

Quick Troubleshooting



Battery Not Charging?

Make sure the battery is not overtightened and the charger's positive pin has not recessed inside the 510 connector. Use a small tool to pry out the center pin back to its original position. Always use a Kurvana charger for optimum use.



No vapor?

When a cartridge is overtightened, the positive pin can recess inside the 510 connector. Use a small tool to pry out the center pin back to its original position.

Color	Finish	Battery Features
Carbon Black	Soft-Touch	● Buttonless 350 mAh Quick Charge
Deep Emerald	Soft-Touch	● Buttonless 350 mAh Quick Charge
Dove Grey	Soft-Touch	○ Buttonless 350 mAh Quick Charge
Gold Metallic	Glossy	● Buttonless 350 mAh Quick Charge
Midnight Purple	Soft-Touch	● Buttonless 350 mAh Quick Charge
Pearl White Metallic	Glossy	○ Buttonless 350 mAh Quick Charge
Rose Gold Metallic	Glossy	● Buttonless 350 mAh Quick Charge
Satin Graphite Metallic	Soft-Touch	● Buttonless 350 mAh Quick Charge

Hardware | Custom Devices

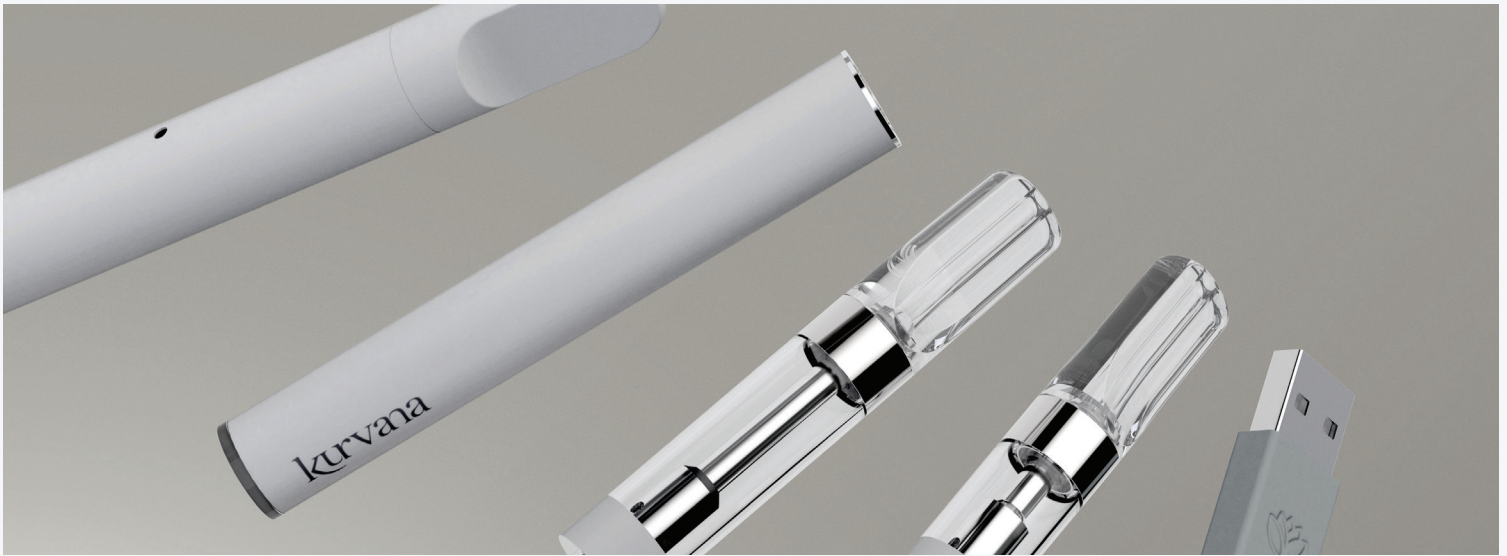
Kurvana's Hardware Devices are precision manufactured with the highest standards of quality, reliability, and safety. Our CTEC 2.0 ceramic heating technology delivers unrivaled efficacy, flavor, and performance. From high quality stainless steel to our BPA-free tank, we keep safety in mind.

Cartridge Key Features

- Longer Lasting Oil
- Precise Air and Oil Flow
- 510 Thread Connection Cartridges
- Heavy Metals Compliant
- Stainless Steel Construction
- BPA-Free Housing Tank

All-In-One Key Features

- Signature, Patented Device
- Tamper-Resistant Mouthpiece
- High Quality Stainless Steel Internals and Body
- Adjustable Airflow
- Integrated Battery
- Heavy Metals Compliant



Packaging | KurvanaScope Labeling

Every Kurvana product and collection utilizes our custom labeling and packaging. First introduced in 2017 with ASCND, KurvanaScope compliant labeling offers unprecedented lab transparency that showcases everything a consumer wants to know prior to purchasing, and everything a budtender needs to guide their customer, at a glance.

Key Features

Front Panel

- Strain Name
- Strain Type
- Strain Genetics
- Strain Attributes
- Strain Description
- Regulatory Requirements

Rear Panel

- Screen Summary
- 5 Primary Terpenes
- Cannabinoid Profile
- LUCID ID Code
- Regulatory Requirements

Packaging

- Up-to 85% Recycled Materials
- Protects Oil From Direct Light
- Certified Child-Resistant
- Rigid and Reusable for proper device storage

KURVANA × LUCID

As a leader in high potency, pure cannabis, Kurvana defines quality as everyone's responsibility to deliver the most natural and safe products that exceed regulatory standards and consumer expectations. To ensure that goal, Kurvana has partnered with LUCID to authenticate Kurvana products, view lab results, and sign-up for Kurvana Rewards Program where customers can collect reward points to be hooked up with swag, discounts, and other exclusive offers.

Vape Collection | Side-by-Side Comparison

Key Mentions	ETHEREAL	CARBON ₂₁	ASCND	Originals	cbd <small>±Minor Cannabinoids</small>
Year Released	2025	2020	2017	2014	2014
SKUs Offered	6	6+	30+	15+	3
Strains Offered	Varies	Varies	Varies	10	3
Awarded	-	Yes	Yes	Yes	Yes
Starting Material Specs					
Pre-Extraction Lab Testing	✓	✓	✓	✓	✓
Live Whole Plant	✓	✓	✓	✓	✓
Single Origin	✓	✓	✓	✓	✓
Genetic Profiles	Exotic	Exotic	Modern	Classic	Classic
Small-Batches	✓	✓	✓	✓	✓
Extraction Specs					
Primary Extraction Type	Rosin	Varies	High-Potency	Terpene-Rich	Terpene-Rich
Full-Spectrum	✓	✓	✓	✓	✓
Minor Cannabinoids	✓	✓	✓	✓	✓
Native Cannabis Ingredients	✓	✓	✓	✓	✓
Entourage Effects	✓	✓	✓	✓	✓
Targetted Effects	✗	✗	✗	✗	✓
Cannabinoid Ratios	✗	✗	✗	✗	✓
Instant Effects	✓	✓	✓	✓	✓
Long-Lasting Effects	✓	✓	✓	✓	✓
Cutting Agents	✗	✗	✗	✗	✗
Additives	✗	✗	✗	✗	✗
Post-Extraction Lab Testing	✓	✓	✓	✓	✓
Potency Specs					
Total Cannabinoids	78%+	85%+	95%+	85%+	70%+
THC	>70%	>80%	>92%	>80%	>25%
THCa	<2%	>3%	<1%	<1%	<2%
CBD	<2%	>1%	<2%	<2%	>25%
CBG	<2%	<1%	<2%	<2%	>5%
CBN	<2%	<1%	<2%	<2%	>5%
KurvanaScope Labeling					
Post-Packaging Lab Testing	✓	✓	✓	✓	✓
Cannabinoid Profile	✓	✓	✓	✓	✓
Terpene Profile	✓	✓	✓	✓	✓
Lab Results	✓	✓	✓	✓	✓
Screen Summary	✓	✓	✓	✓	✓
Potential Strain Effects	✓	✓	✓	✓	✓
Strain Genetic Lineage	✓	✓	✓	✗	✗
Strain Description	✓	✓	✓	✓	✓
Kurvana Rewards	✓	✓	✓	✓	✓
Hardware Specs					
CTEC 2.0 (Advanced Ceramic Heating Element)	✓	✓	✓	✓	✓
Custom Designed Hardware	✓	✓	✓	✓	✓
Smooth Draws	✓	✓	✓	✓	✓
Premium Alloys	✓	✓	✓	✓	✓
510 Cartridge Offerings	✓	✓	✓	✓	✗
All-In-One Offerings	✓	✓	✓	✓	✓
Strain-Specific Color	✓	✗	✓	✓	✓
Recommended User					
Beginner	✗	✗	✗	✓	✓
Seasoned	✓	✓	✓	✓	✓
Cannaisseur	✓	✓	✓	✓	✗



**CURATED FOR YEARS.
EXPERIENCED IN MOMENTS.**

[kurvana.com](https://www.kurvana.com) | [@kurvana](https://twitter.com/kurvana) | [#C11-0000424-LIC](https://www.cannabiscannabis.com/licenses/#C11-0000424-LIC)

A spent cannabis cartridge shall be properly disposed of as hazardous waste at a household hazardous waste collection facility or other approved facility.
An empty integrated cannabis vaporizer shall be properly disposed of as hazardous waste at a household hazardous waste collection facility or other approved facility.